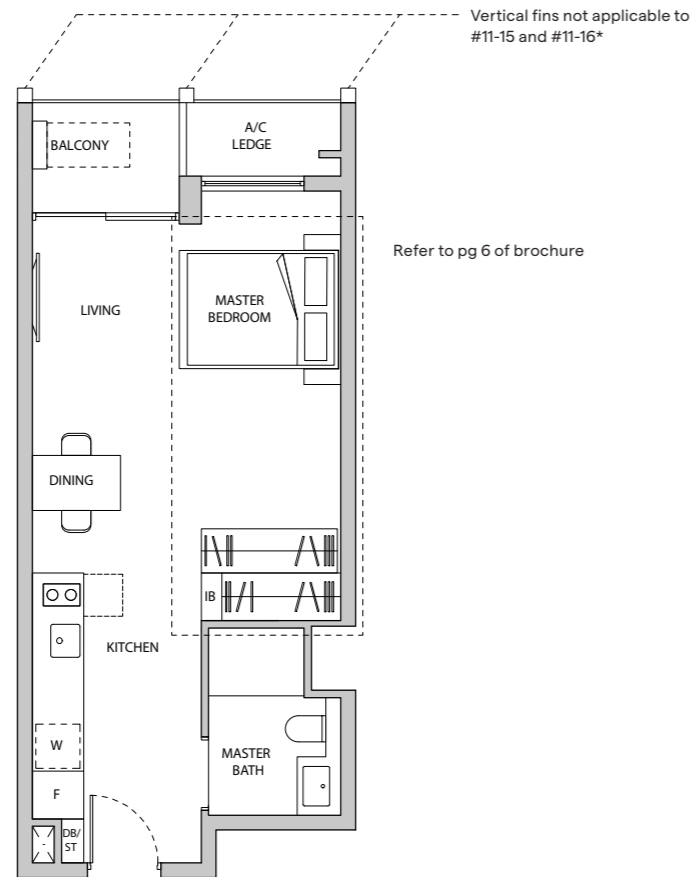


FLIP / SWITCH

TYPE A1

AREA 44 sqm (include 2 sqm A/C Ledge, 4 sqm Balcony)

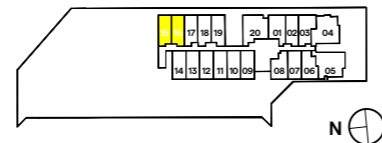
UNIT(S) #04-15 to #11-15
 #14-15 to #18-15
 #04-16* to #11-16*
 #14-16* to #18-16*



LEGEND
 IB: IRONING BOARD

NOTE:
 *Mirror Image

Plans are subject to change/amendments as may be required and/or approved by the Developer and/or the relevant authorities and do not form part of any offer or contract. These are not drawn to scale and are for the purpose of visual presentation only. The balcony shall not be enclosed unless with the approved balcony screen. For an illustration of the approved balcony screen, please refer to APPROVED BALCONY SCREEN DESIGN page of this brochure.

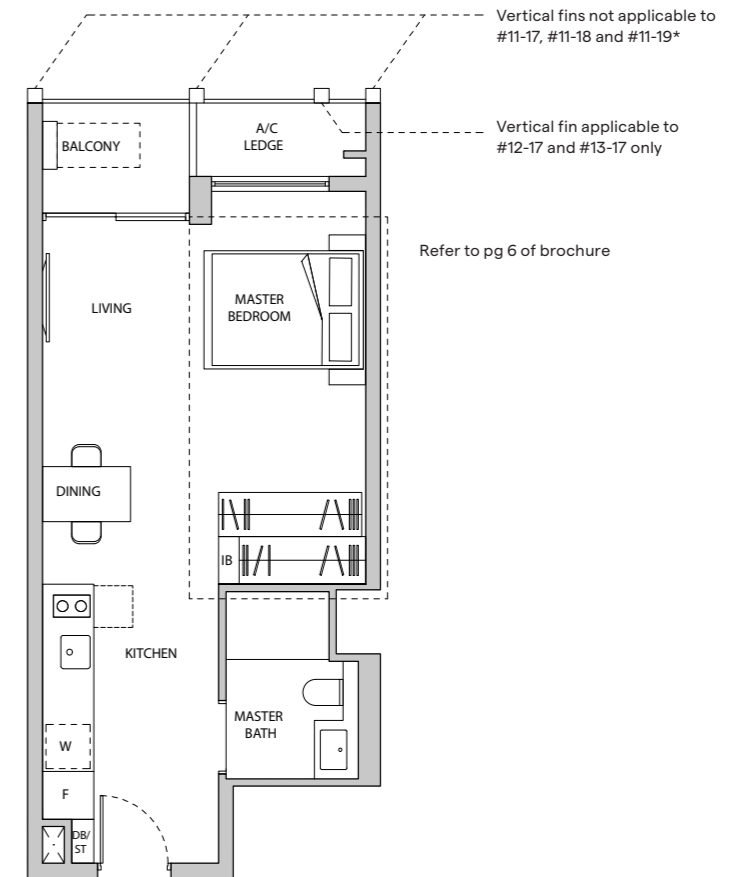


FLIP / SWITCH

TYPE A2

AREA 45 sqm (include 3 sqm A/C Ledge, 4 sqm Balcony)

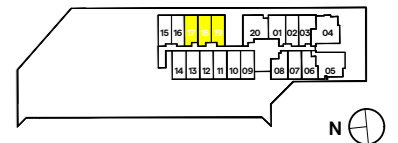
UNIT(S) #04-17 to #18-17
 #04-18 to #18-18
 #04-19* to #18-19*



LEGEND
 IB: IRONING BOARD

NOTE:
 *Mirror Image

Plans are subject to change/amendments as may be required and/or approved by the Developer and/or the relevant authorities and do not form part of any offer or contract. These are not drawn to scale and are for the purpose of visual presentation only. The balcony shall not be enclosed unless with the approved balcony screen. For an illustration of the approved balcony screen, please refer to APPROVED BALCONY SCREEN DESIGN page of this brochure.

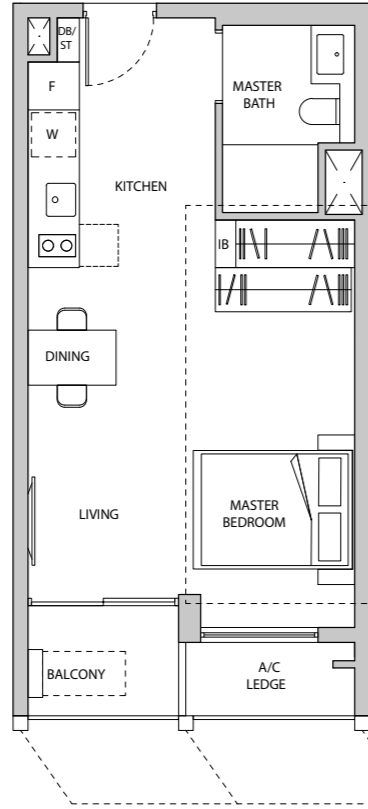


FLIP / SWITCH

TYPE A3

AREA 44 sqm (include 3 sqm A/C Ledge, 4 sqm Balcony)

UNIT(S) #05-07 to #20-07
 #05-09 to #19-09
 #05-10 to #19-10
 #05-11 to #19-11
 #05-12 to #19-12
 #05-13 to #19-13
 #05-14 to #19-14



Refer to pg 6 of brochure

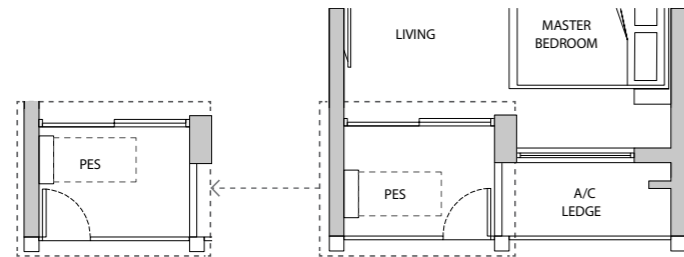
Vertical fins not applicable to
 #12-07
 #07-09, #10-09
 #07-10, #10-10
 #07-11, #10-11
 #07-12, #10-12
 #07-13, #10-13
 #07-14, #10-14

LEGEND
 IB: IRONING BOARD

TYPE A3-G

AREA 44 sqm (include 3 sqm A/C Ledge, 4 sqm PES)

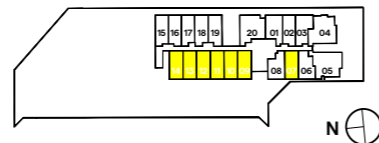
UNIT(S) #04-07
 #04-09
 #04-10
 #04-11
 #04-12
 #04-13
 #04-14



Applicable to #04-07 only

NOTE:
 *Mirror Image

Plans are subject to change/amendments as may be required and/or approved by the Developer and/or the relevant authorities and do not form part of any offer or contract. These are not drawn to scale and are for the purpose of visual presentation only. The balcony shall not be enclosed unless with the approved balcony screen. For an illustration of the approved balcony screen, please refer to APPROVED BALCONY SCREEN DESIGN page of this brochure.

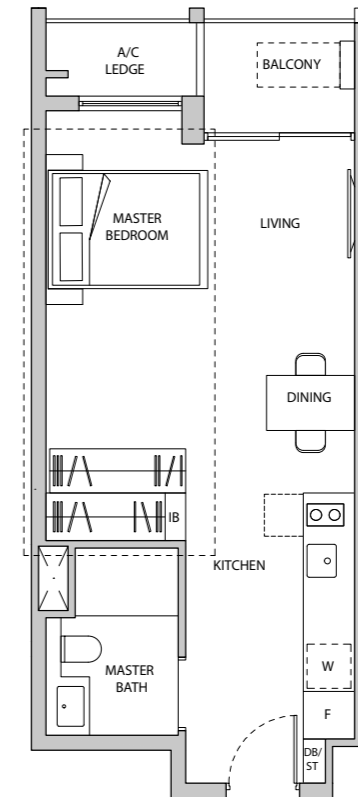


FLIP / SWITCH

TYPE A4

AREA 45 sqm (include 3 sqm A/C Ledge, 4 sqm Balcony)

UNIT(S) #04-02 to #20-02

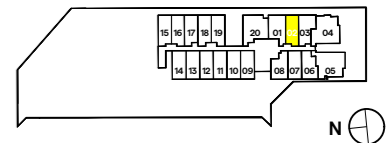


Refer to pg 6 of brochure

LEGEND
 IB: IRONING BOARD

NOTE:
 *Mirror Image

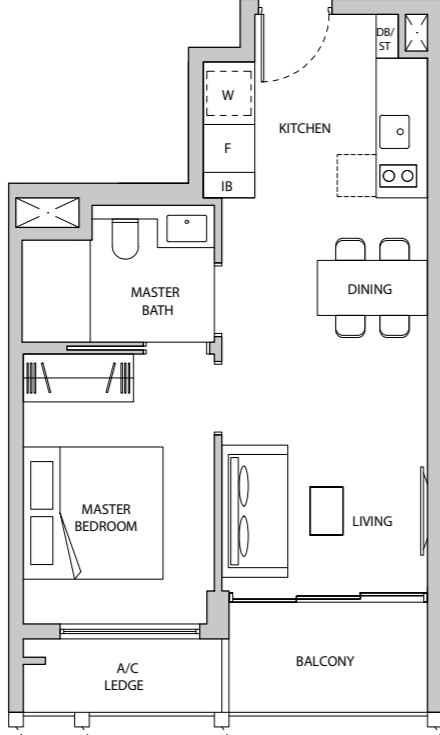
Plans are subject to change/amendments as may be required and/or approved by the Developer and/or the relevant authorities and do not form part of any offer or contract. These are not drawn to scale and are for the purpose of visual presentation only. The balcony shall not be enclosed unless with the approved balcony screen. For an illustration of the approved balcony screen, please refer to APPROVED BALCONY SCREEN DESIGN page of this brochure.



1-BEDROOM SUITE

TYPE 1B1

AREA 48 sqm (include 3 sqm A/C Ledge, 5 sqm Balcony)
UNIT(S) #05-08 to #20-08

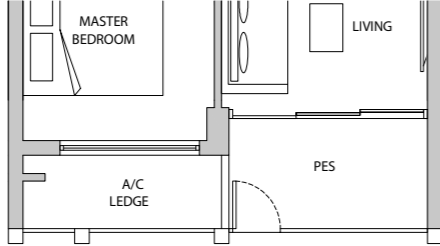


Vertical fins not applicable to #12-08

LEGEND
 IB: IRONING BOARD

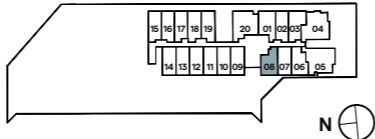
TYPE 1B1-G

AREA 48 sqm (include 3 sqm A/C Ledge, 5 sqm PES)
UNIT(S) #04-08



NOTE:
 *Mirror Image

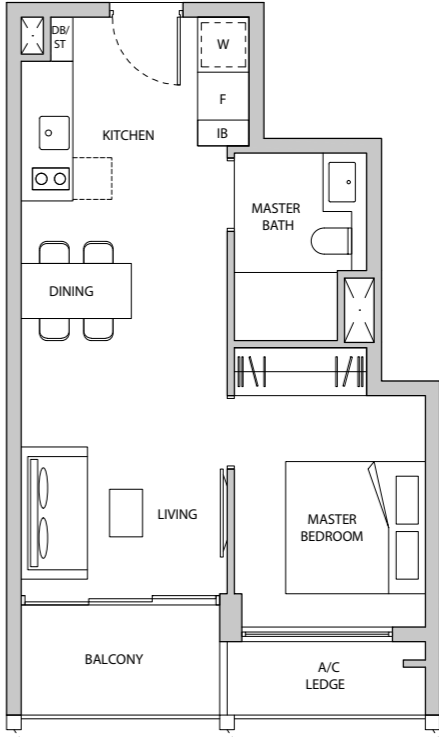
Plans are subject to change/amendments as may be required and/or approved by the Developer and/or the relevant authorities and do not form part of any offer or contract. These are not drawn to scale and are for the purpose of visual presentation only. The balcony shall not be enclosed unless with the approved balcony screen. For an illustration of the approved balcony screen, please refer to APPROVED BALCONY SCREEN DESIGN page of this brochure.



1-BEDROOM SUITE

TYPE 1B2

AREA 48 sqm (include 3 sqm A/C Ledge, 5 sqm Balcony)
UNIT(S) #04-06 to #20-06

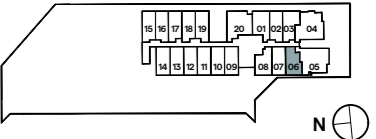


Vertical fins not applicable to #12-06

LEGEND
 IB: IRONING BOARD

NOTE:
 *Mirror Image

Plans are subject to change/amendments as may be required and/or approved by the Developer and/or the relevant authorities and do not form part of any offer or contract. These are not drawn to scale and are for the purpose of visual presentation only. The balcony shall not be enclosed unless with the approved balcony screen. For an illustration of the approved balcony screen, please refer to APPROVED BALCONY SCREEN DESIGN page of this brochure.

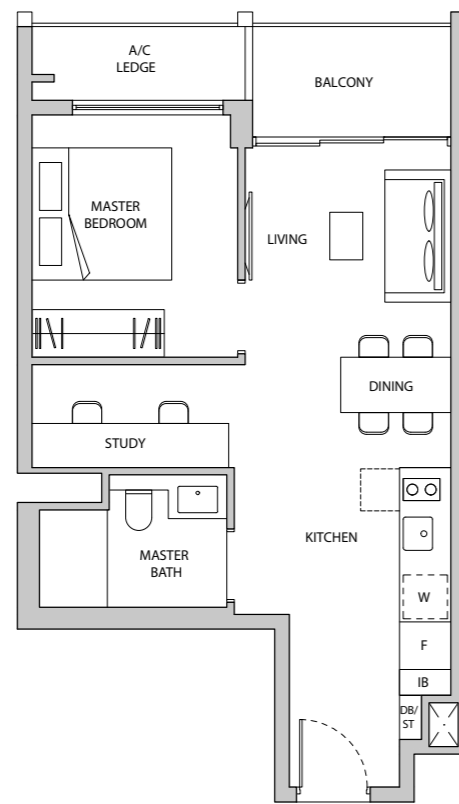


1-BEDROOM + STUDY

TYPE 1S1

AREA 53 sqm (include 4 sqm A/C Ledge, 5 sqm Balcony)

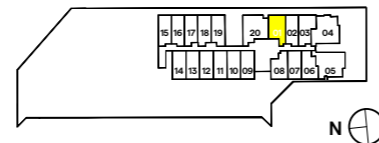
UNIT(S) #04-01 to #20-01



LEGEND
IB: IRONING BOARD

NOTE:
*Mirror Image

Plans are subject to change/amendments as may be required and/or approved by the Developer and/or the relevant authorities and do not form part of any offer or contract. These are not drawn to scale and are for the purpose of visual presentation only. The balcony shall not be enclosed unless with the approved balcony screen. For an illustration of the approved balcony screen, please refer to APPROVED BALCONY SCREEN DESIGN page of this brochure.



1-BEDROOM + STUDY

TYPE 1S2

AREA 51 sqm (include 4 sqm A/C Ledge, 5 sqm Balcony)

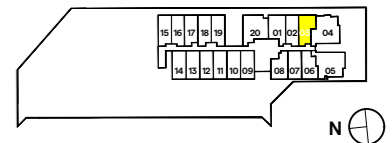
UNIT(S) #04-03 to #20-03



LEGEND
IB: IRONING BOARD

NOTE:
*Mirror Image

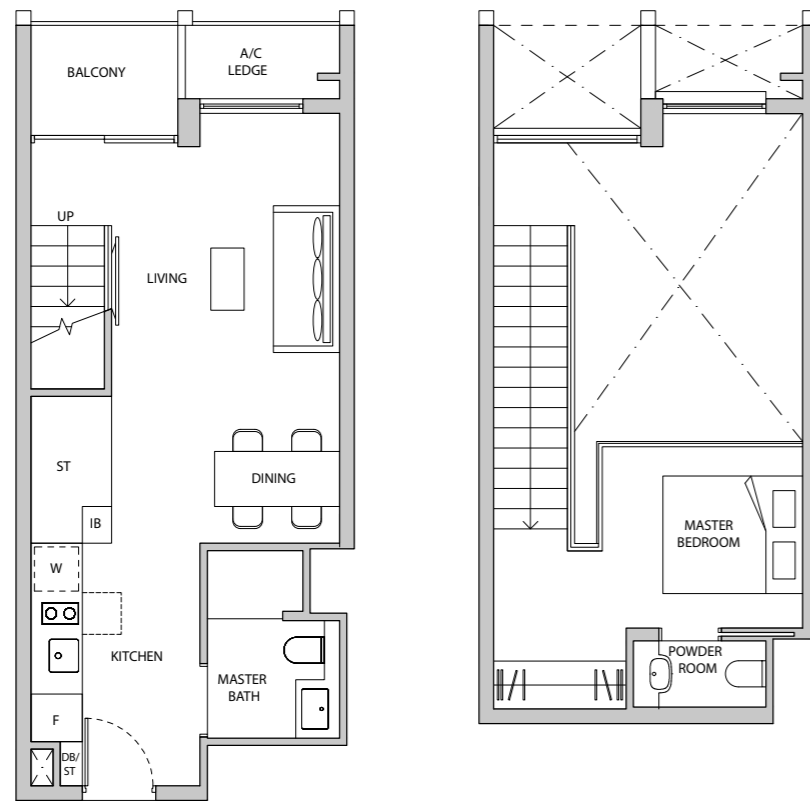
Plans are subject to change/amendments as may be required and/or approved by the Developer and/or the relevant authorities and do not form part of any offer or contract. These are not drawn to scale and are for the purpose of visual presentation only. The balcony shall not be enclosed unless with the approved balcony screen. For an illustration of the approved balcony screen, please refer to APPROVED BALCONY SCREEN DESIGN page of this brochure.



1-BEDROOM LOFT

TYPE BL1

AREA 79 sqm (include 2 sqm A/C Ledge, 4 sqm Balcony, 21 sqm Void)
UNIT(S) #19-15
 #19-16*



LOWER LOFT

UPPER LOFT

LEGEND
 IB: IRONING BOARD

NOTE:
 *Mirror Image

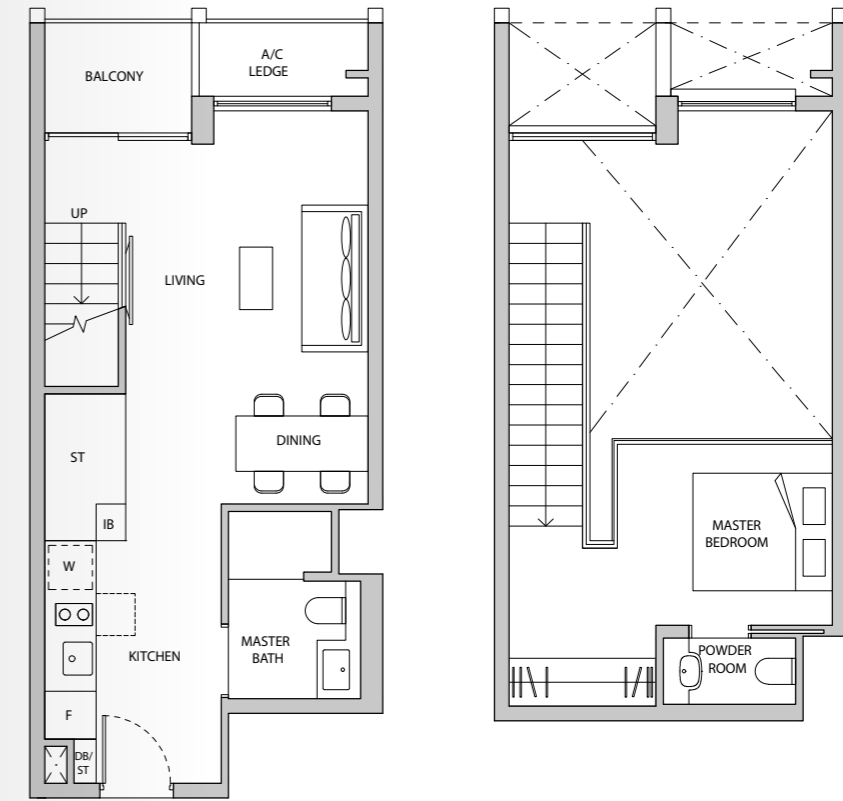
Plans are subject to change/amendments as may be required and/or approved by the Developer and/or the relevant authorities and do not form part of any offer or contract. These are not drawn to scale and are for the purpose of visual presentation only. The balcony shall not be enclosed unless with the approved balcony screen. For an illustration of the approved balcony screen, please refer to APPROVED BALCONY SCREEN DESIGN page of this brochure.



1-BEDROOM LOFT

TYPE BL2

AREA 82 sqm (include 3 sqm A/C Ledge, 4 sqm Balcony, 22 sqm Void)
UNIT(S) #19-17
 #19-18
 #19-19*



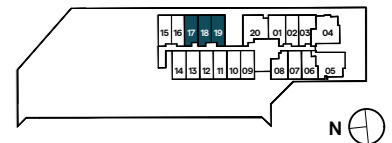
LOWER LOFT

UPPER LOFT

LEGEND
 IB: IRONING BOARD

NOTE:
 *Mirror Image

Plans are subject to change/amendments as may be required and/or approved by the Developer and/or the relevant authorities and do not form part of any offer or contract. These are not drawn to scale and are for the purpose of visual presentation only. The balcony shall not be enclosed unless with the approved balcony screen. For an illustration of the approved balcony screen, please refer to APPROVED BALCONY SCREEN DESIGN page of this brochure.

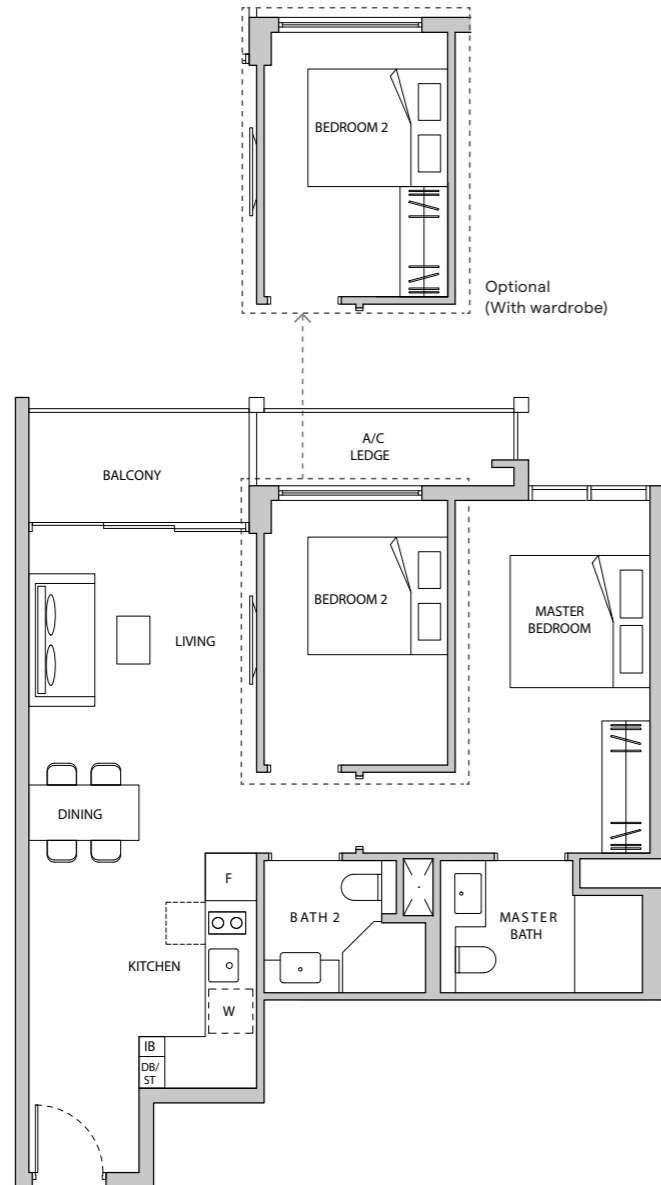


2-BEDROOM PREMIUM

TYPE 2C1

AREA 73 sqm (include 4 sqm A/C Ledge, 5 sqm Balcony)

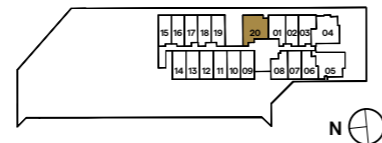
UNIT(S) #04-20 to #19-20



LEGEND
IB: IRONING BOARD

NOTE:
*Mirror Image

Plans are subject to change/amendments as may be required and/or approved by the Developer and/or the relevant authorities and do not form part of any offer or contract. These are not drawn to scale and are for the purpose of visual presentation only. The balcony shall not be enclosed unless with the approved balcony screen. For an illustration of the approved balcony screen, please refer to APPROVED BALCONY SCREEN DESIGN page of this brochure.

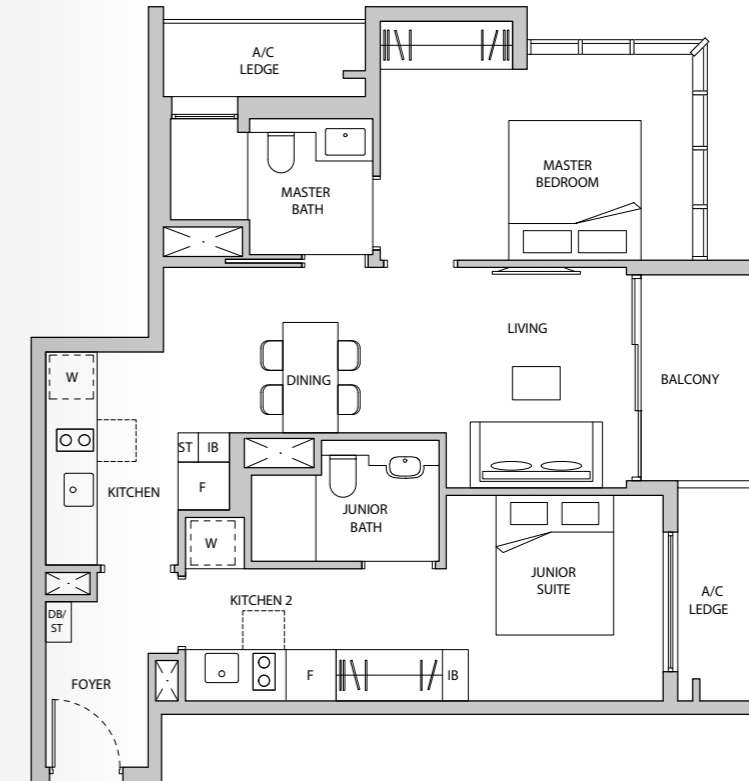


2-BEDROOM DUAL-KEY

TYPE 2DK1

AREA 81 sqm (include 7 sqm A/C Ledge, 5 sqm Balcony)

UNIT(S) #05-04 to #20-04

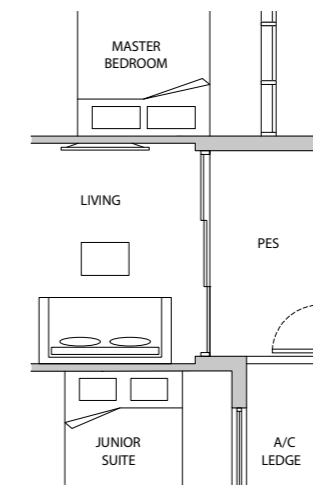


LEGEND
IB: IRONING BOARD

TYPE 2DK-1G

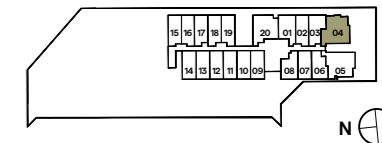
AREA 81 sqm (include 7 sqm A/C Ledge, 5 sqm PES)

UNIT(S) #04-04



NOTE:
*Mirror Image

Plans are subject to change/amendments as may be required and/or approved by the Developer and/or the relevant authorities and do not form part of any offer or contract. These are not drawn to scale and are for the purpose of visual presentation only. The balcony shall not be enclosed unless with the approved balcony screen. For an illustration of the approved balcony screen, please refer to APPROVED BALCONY SCREEN DESIGN page of this brochure.

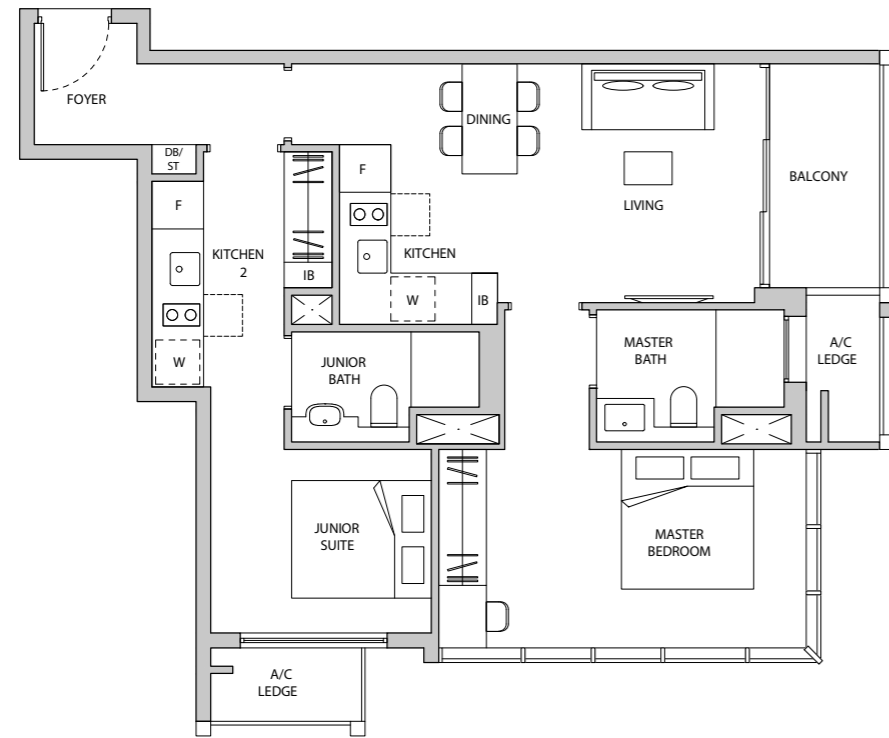


2-BEDROOM DUAL-KEY

TYPE 2DK2

AREA 80 sqm (include 5 sqm A/C Ledge, 5 sqm Balcony)

UNIT(S) #05-05 to #20-05

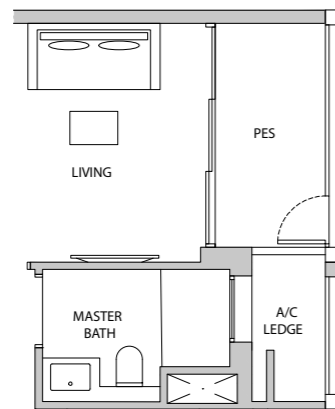


LEGEND
IB: IRONING BOARD

TYPE 2DK-2G

AREA 80 sqm (include 5 sqm A/C Ledge, 5 sqm PES)

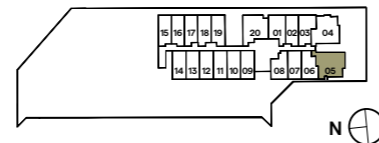
UNIT(S) #04-05



NOTE:

*Mirror Image

Plans are subject to change/amendments as may be required and/or approved by the Developer and/or the relevant authorities and do not form part of any offer or contract. These are not drawn to scale and are for the purpose of visual presentation only. The balcony shall not be enclosed unless with the approved balcony screen. For an illustration of the approved balcony screen, please refer to APPROVED BALCONY SCREEN DESIGN page of this brochure.



MULTIPLE SMART FEATURES FOR THE MULTI-HYPHENATES

There is no place like home. For the multi-hyphenates of tomorrow, this certainly rings true here in TMW Maxwell where homes are fitted with multiple smart features that enable and empower simultaneous live, work and play lifestyles.



SMART HOME HUB

A centralised control hub that connects to all compatible devices seamlessly.



DIGITAL LOCKSET

Added convenience of touchless and remote door security.



IP CAMERA

Remote monitoring of in-house activities for extra peace of mind.



SMART AIR CONDITIONER CONTROLS

Wireless control over air conditioning optimises comfort levels even before every arrival home.